



PROJECT		REF		REV	ITEM CODE	
LOCATION		DATE			PAGE	

SANITARY WARE SPECIFICATION SHEET

Item Descriptions	ELKAY (USA) Stainless Steel wall mount low lead bottle filler sensor with electronic front and side bubbler push bar activation
Model	LZSTL8WSS2K (Drinking Fountain) EWF3000 (Filter) MUV-60 (UV Sterilizer)
Finish	Stainless Steel
Manufacturer	ELKAY (USA)
Supplier	Acme Sanitary Ware Co. Ltd Mr. Eric Wong/ Mr. Don Yuen
Contact Tel/Fax	(852) 2388-7171 / (852) 2710-8012
E-mail	acme@acmesanitary.com.hk
Website	www.acmesanitary.com.hk

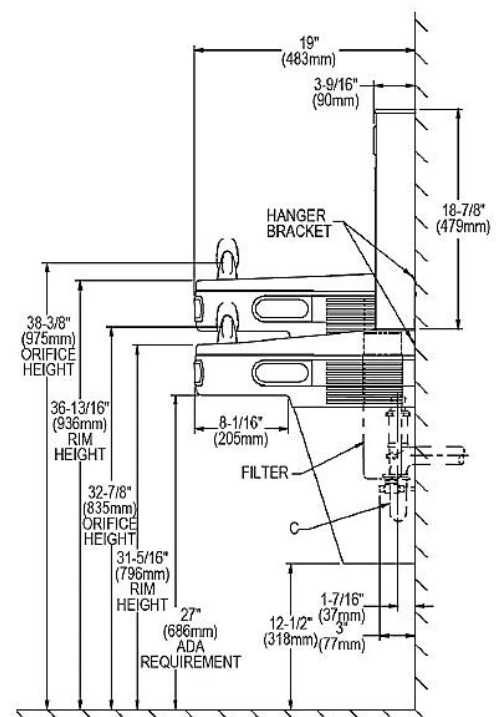
Features

- Touchless, sensor activation (bottle filler) designed for easy use; easy-to-operate push-bar activation (bubbler).
- Hermetically sealed refrigeration system provides chilled water to satisfy thirst.
- Fill rate is 1.1 GPM. Laminar flow provides clean fill with minimal splash.
- Visual filter monitor with LED filter status indicator for when filter change is necessary.
- The 3,000-gallon filter is certified to NSF 42 and 53 for lead, Class 1 particulate, chlorine, taste and odor reduction.
- Green Ticker™ informs user of number of 20 oz. plastic water bottles saved from waste.
- Silver ion antimicrobial protection on key plastic components to inhibit the growth of mold and mildew.
- Real drain system eliminates standing water.
- Flexi-Guard bubbler provides a flexible antimicrobial mouth guard to protect against injury and microorganisms.
- Rated for indoor use.



BRING AN ELKAY EZH2O TO YOUR SCHOOL!

Illustration/ Drawing



* All information of the above is for the reference only. No prior notice is made if any changes.



PROJECT		REF		REV	ITEM CODE	
LOCATION		DATE			PAGE	

ELKAY[®] SPECIFICATIONS

Elkay EZH2O Bottle Filling Station with Versatile Bi-Level ADA Cooler Filtered Refrigerated Stainless 220V Model LZSTL8WSS2K

PRODUCT SPECIFICATIONS

Elkay EZH2O[®] Bottle Filling Station with Versatile Bi-Level ADA Cooler Filtered Refrigerated Stainless 220V. Chilling Capacity of 8.0 GPH (gallons per hour) of 50° F drinking water, based on 80° F inlet water and 90° F ambient, per ASHRAE 18 testing. Features shall include Antimicrobial, Filtered, Green Ticker[™], Hands Free, Laminar Flow, Real Drain, Visual Filter Monitor. Furnished with Flexi-Guard[®] Safety Bubbler. Electronic Bottle Filler Sensor with Electronic Front and Side Bubbler Pushbar activation. Product shall be Wall Mount (On Wall), for indoor applications, serving 2 station(s).



Special Features:	Antimicrobial, Filtered, Green Ticker [™] , Hands Free, Laminar Flow, Real Drain, Visual Filter Monitor
Finish:	Stainless Steel
Power:	220V/50Hz
Bubbler Style:	Flexi-Guard [®] Safety Bubbler
Activation by:	Electronic Bottle Filler Sensor with Electronic Front and Side Bubbler Pushbar
Mounting Type:	Wall Mount (On Wall)
Chilling Capacity*:	8.0 GPH
Full Load Amps	3
Rated Watts:	370
Dimensions (L x W x H):	36-3/4" x 19" x 39-1/16"
Approx. Shipping Weight:	106 lbs.
Installation Location:	Indoor
No. of Stations Served:	2

*Based on 80° F inlet water & 90° F ambient air temp for 50° F chilled drinking water.

- Visual Filter Monitor: LED Filter Status Indicator for when filter change is necessary.
- Filter is certified to NSF 42 and 53 for lead, cyst, particulate, chlorine, taste and odor reduction. 3,000 gal. capacity.
- Green Ticker: Informs user of number of 20 oz. plastic water bottles saved from waste.
- Laminar flow provides clean fill with minimal splash.
- Silver Ion Antimicrobial protection on key plastic components to inhibit the growth of mold and mildew.
- Real Drain System eliminates standing water.

COOLING SYSTEM

- Compressor: Hermetically-sealed, reciprocating type, single phase. Sealed-in lifetime lubrication.
- Condenser: Fan cooled, copper tube with aluminum fins. Fan motor is permanently lubricated.
- Cooling Unit: Combination tube-tank type. Continuous copper tubing with is fully insulated with EPS foam that

Included with Product: Water Cooler (LZSTL8WSS2JOC), Bottle Filler (LZWSRJO), Filter

▼ Ships in multiple boxes.

A Century of Tradition and Quality. For more than 100 years, Elkay has been making innovative products and providing exceptional customer care. We take pride in offering plumbing products that make life easier, inspire change and leave the world a better place.

PRODUCT COMPLIANCE

ADA & ICC A117.1
ASME A112.19.3/CSA B45.4
Buy American Act
CAN/CSA G22.2 No. 120
CE
GreenSpec[®]
NSF/ANSI 42, 53, 61, & 372 (lead free)
UL 399



[Installation Instructions \(PDF\) - 100002657](#)

自願參與用水效益標籤計劃 - 水龍頭

- 3.5 本計劃的條文適用於安裝在浴室/廁所內洗臉盆和茶水房/廚房內洗滌槽的冷熱水混合(混合式)或非混合式的水龍頭。配有自動感應開/關器或自動關閉閥的水龍頭亦納入本計劃內。然而,安裝在浴缸/花灑、任何系統、機器及裝置例如灌溉系統、洗衣機、飲水機等的水龍頭因屬沐浴/操作的用途而不包括在本計劃內。



Note

* All information of the above is for the reference only. No prior notice is made if any changes.



PROJECT		REF		REV	ITEM CODE	
LOCATION		DATE			PAGE	

ELKAY
 SPECIFICATIONS

Elkay EZH2O Bottle Filling Station with Versatile Bi-Level ADA Cooler Filtered Refrigerated Stainless 220V Model LZSTL8WSS2K

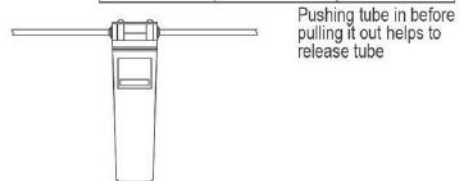
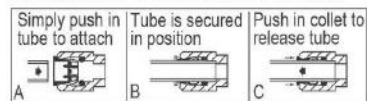
IMPORTANT! INSTALLER PLEASE NOTE :

This water cooler has been designed and built to provide water to the user which has not been altered by materials in the cooler waterways. The grounding of electrical equipment such as telephone, computer, etc. to water lines is a common procedure. The grounding may be in the building but may also occur away from the building. This grounding can cause electrical feedback into a water cooler creating an electrolysis which creates a metallic taste or causes an increase in the metal content of the water. This condition is avoidable by installing the cooler using the proper materials as shown below.

NOTICE

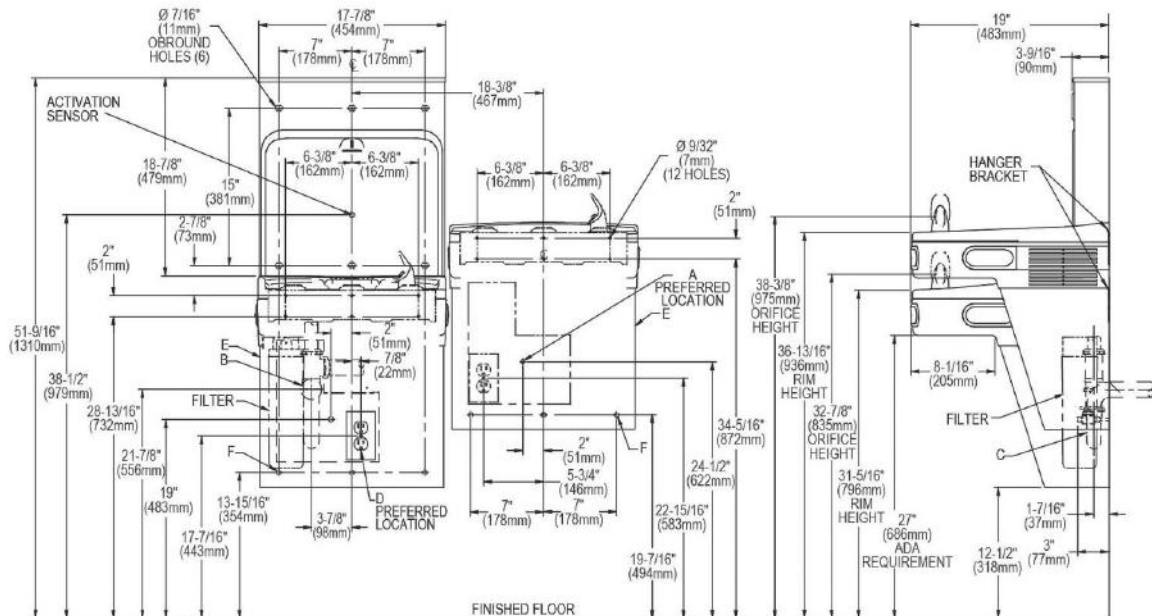
This water cooler must be connected to the water supply using a dielectric coupling. The cooler is furnished with a non-metallic strainer which meets this requirement. The drain trap which is provided by the installer should also be plastic to completely isolate the cooler from the building plumbing system. Bottle filler unit on bracket attached to wall by 6 holes (as shown). Water and electrical will connect through pre-punched hole in basin. These products are designed to operate on 20 psi to 105 psi supply line pressure. Simultaneous operation of both bubblers on a bi-level unit may not be possible depending on water supply pressure. If simultaneous operation is desired, please ensure a minimum of 65 psi supply.

OPERATION OF QUICK CONNECT FITTINGS



WaterSentry® Plus Filter System

ROUGH-IN FOR RIGHT-HAND HIGH SIDE MODELS



REDUCE HEIGHT BY 3 INCHES FOR INSTALLATION OF CHILDRENS ADA COOLER

LEGEND:

- A = Recommended Water Supply location. Shut-off Valve (not furnished) to accept 3/8" O.D. unplated copper tube. Up to 3" (76mm) maximum out from wall.
 - B = Recommended Waste Outlet location. To accommodate 1-1/2" nominal drain. Drain stub 2" (51mm) out from wall.
 - C = 1-1/2" Trap (not furnished).
 - D = Electrical Supply (3) Wire Recessed Box Duplex Outlet.
 - E = Insure proper ventilation by maintaining 6" (152mm) minimum clearance from cabinet louvers to wall.
 - F = 7/16" (11mm) Bolt Holes for fastening to wall.
- Note : New Installations Must Use Ground Fault Circuit Interrupter (GFCI). It is highly recommended that the circuit be dedicated and the load protection be sized for 20 amps.

Note

* All information of the above is for the reference only. No prior notice is made if any changes.



PROJECT		REF		REV	ITEM CODE	
LOCATION		DATE			PAGE	

ELKAY
 SPECIFICATIONS

Elkay EZH2O Bottle Filling Station with Versatile Bi-Level ADA Cooler Filtered Refrigerated Stainless 220V Model LZSTL8WSS2K

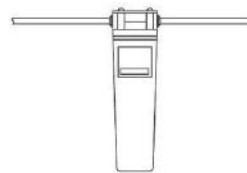
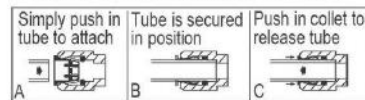
IMPORTANT! INSTALLER PLEASE NOTE :

This water cooler has been designed and built to provide water to the user which has not been altered by materials in the cooler waterways. The grounding of electrical equipment such as telephone, computer, etc. to water lines is a common procedure. The grounding may be in the building but may also occur away from the building. This grounding can cause electrical feedback into a water cooler creating an electrolysis which creates a metallic taste or causes an increase in the metal content of the water. This condition is avoidable by installing the cooler using the proper materials as shown below.

NOTICE

This water cooler must be connected to the water supply using a dielectric coupling. The cooler is furnished with a non-metallic strainer which meets this requirement. The drain trap which is provided by the installer should also be plastic to completely isolate the cooler from the building plumbing system. Bottle filler unit on bracket attached to wall by 6 holes (as shown). Water and electrical will connect through pre-punched hole in basin. These products are designed to operate on 20 psi to 105 psi supply line pressure. Simultaneous operation of both bubblers on a bi-level unit may not be possible depending on water supply pressure. If simultaneous operation is desired, please ensure a minimum of 65 psi supply.

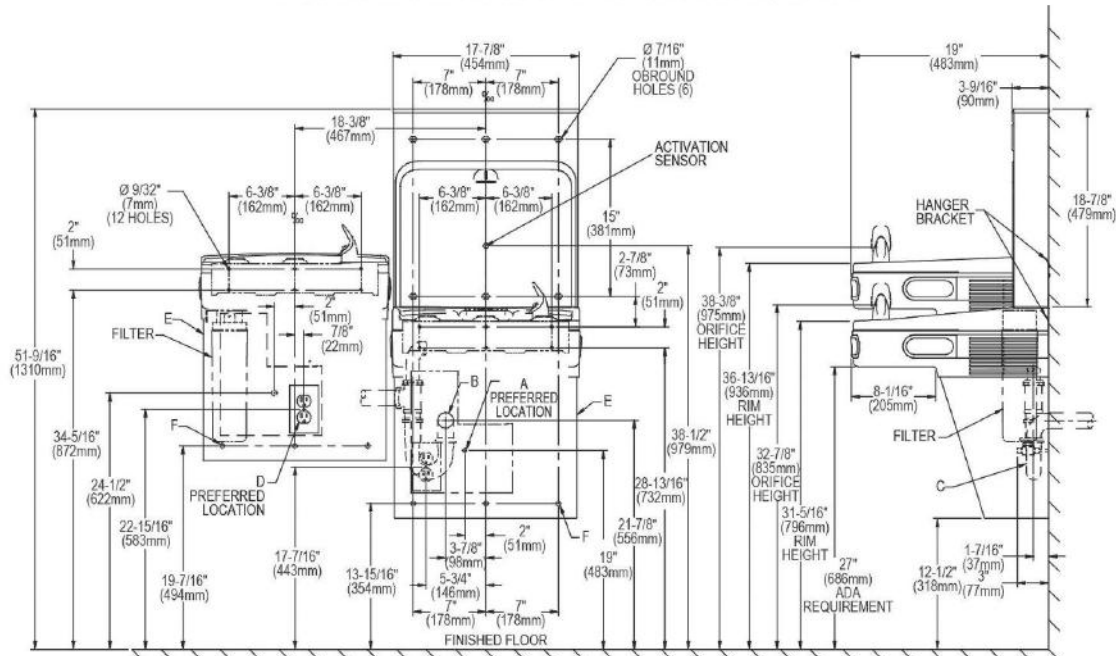
OPERATION OF QUICK CONNECT FITTINGS



WaterSentry[®] Plus Filter System

Pushing tube in before pulling it out helps to release tube

ROUGH-IN FOR LEFT-HAND HIGH SIDE MODELS



LEGEND:
 REDUCE HEIGHT BY 3 INCHES FOR INSTALLATION OF CHILDRENS ADA COOLER
 A = Recommended Water Supply location. Shut-off Valve (not furnished) to accept 3/8" O.D. unplated copper tube. Up to 3" (76mm) maximum out from wall.
 B = Recommended Waste Outlet location. To accommodate 1-1/2" nominal drain. Drain stub 2" (51mm) out from wall.
 C = 1-1/2" Trap (not furnished).
 D = Electrical Supply (3) Wire Recessed Box Duplex Outlet.
 E = Insure proper ventilation by maintaining 6" (152mm) minimum clearance from cabinet louvers to wall.
 F = 7/16" (11mm) Bolt Holes for fastening to wall.
 Note : New Installations Must Use Ground Fault Circuit Interrupter (GFCI). It is highly recommended that the circuit be dedicated and the load protection be sized for 20 amps.

Note

* All information of the above is for the reference only. No prior notice is made if any changes.



PROJECT		REF		REV	ITEM CODE	
LOCATION		DATE			PAGE	

ELKAY[®] SPECIFICATIONS

WaterSentry Plus Filter System Kit (Bottle Fillers) Model(s) EWF3000

PRODUCT SPECIFICATIONS

WaterSentry Plus Filter System Kit (Bottle Fillers). Overall dimensions are 5-1/4" x 5-1/4" x 12-1/2".

Dimensions:	5-1/4" x 5-1/4" x 12-1/2"
Shipping Weight:	3 lbs.
Capacity:	3000 gal. (11356 L)
Flow Rate:	1.5 GPM (5.6 L/m)
Temperature:	40-100°F (4-38°C)
Initial Pressure Drop:	2-5 PSI (14-34 kPa)
Maximum Pressure:	105 PSI (724 kPa)
Minimum Pressure:	20 PSI (138 kPa)
Water Inlet:	3/8" (9.5mm) O.D. tube
Water Outlet:	1/4" (6.4mm) O.D. tube

Special Note: For use with ezH2O Bottle Fillers - Order 51300C as replacement filter (available in multipacks).

- WaterSentry Plus Retrofit Filter Kit for unfiltered Elkay drinking solution products (Bottle Fillers).
- Filter should be replaced every 3,000 gallons or 1 year after installation.
- Equipped with Quick-Disconnect, 1/4 turn installation, as well as automatic inlet shutoff valve that closes when filter is removed.
- Designed to reduce lead, particles and chlorine. Also reduces odors and discoloration from incoming water.
- Spun Polypropylene prefilter mesh to prevent large, coarse sediment and particles from entering and clogging filter media.
- Filter is certified to NSF 42 and 53 for lead, particulate class 1, chlorine, taste and odor reduction.

KIT INCLUDES

- Filter
- Filter head
- Mounting bracket
- 1/4" polytubing
- 3/8" copper tube
- 1/4" quick connect union
- 1/4" quick connect stem elbow



Included with Product: 3000 gal filter cartridge, kit components

AMERICAN PRIDE. A LIFETIME TRADITION.
Like your family, the Elkay family has values and traditions that endure. For almost a century, Elkay has been a family-owned and operated company, providing thousands of jobs that support our families and communities.



Product Compliance: BUY AMERICAN ACT
NSF 42
NSF 53
NSF 372 (lead free)



[Installation Instructions \(PDF\)](#)

INSTALLATION INSTRUCTIONS

The filter must be installed in compliance with all state and local laws and regulations governing the installation and use of this product.

Disconnect electrical power and close water supply valve before proceeding.

The filter must be installed in the cold water line.

Flow indicator (arrow) on filter should point in the same direction as the water flow.

After installing new filter, open water supply valve and check for leaks. Reconnect electrical power supply. Flush system sufficiently (approximately 3 minutes) to effectively remove small residue of carbon fines.

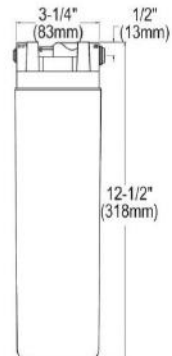
NOTE: A water shutoff valve should be installed on the incoming water line to aid in future servicing of filter.

CAUTION

• Filter is designed to reduce lead from incoming water to levels below EPA requirements. Do not use with water that is microbiologically unsafe or with water of unknown quality without adequate disinfection before or after the system.

• Use on cold water line only. Do not allow installed filter to freeze. Do not attach hot water line to filter.

• Filter should be replaced every 3000 gallons (11,356 liters), or approximately 1 year after installation.



Note

* All information of the above is for the reference only. No prior notice is made if any changes.



PROJECT		REF		REV	ITEM CODE	
LOCATION		DATE			PAGE	

MUV-60

MUV Series Specification



Maximum Capacity 最大流量		Lamp Energy Consumption UV光管用電量	Current Flow Rate 電流	Water Inlet / Outlet 出入口	Dimension 尺寸	Net Weight 淨重
L/s 升/秒	GPM 加侖/分鐘	Watt 瓦特	Ampere 安培	Inch 吋	mm 毫米	KG 公斤
0.06	1	8	0.15	3/8	280 (W) x 150 (D) x 360 (H) mm	7

產品備有:

1. 殺菌缸

- 以304不鏽鋼焊接為一組機身

2. 紫外光管效能

- 9,000 小時連續使用

3. 安全設備

- 內置安全關水閥及停電截水設備

4. 可後加額外功能

- BMS 開關接線
- 高紫外光放射量設計
- 高流量設計
- 法蘭接口
- 放射量UV錶

Features:

1. Sterilizing Chamber

- Constructed of 304 stainless steel and precision welded as a single unit.

2. Ultra-violet Lamps Durability

- 9,000 hours of continuous operation.

3. Safety Devices

- built-in safety shut-off solenoid valve and fail-safe deactivation system

4. Additional Features Available

- BMS relay contact
- Ultra UV exposure
- Ultra flow capacity
- Flange connection
- % Intensity UV meter



Operation Conditions:

1. Working Pressure

recommended not to exceed 100 p.s.i.

2. Pressure Drop

ranging from 2 – 5 p.s.i. depending on model.

3. Electricity Supply

220 Volts 50 Hz for standard models.

4. Ultra-violet Exposure

average exceeding 30,000 microwatt sec/cm².

操作條件:

1. 工作壓力

建議不可高於100 p.s.i.

2. 壓力降

約2 – 5 p.s.i., 視乎個別型號。

3. 電源

220 Volts 50 Hz

4. 紫外光放射量

平均超過30,000 microwatt sec/cm²